

To bicycle riders in Aichi Prefecture

Ordinance on Promotion of Safe and Proper Use of Bicycles

In March 2021, Aichi Prefecture enacted the "Ordinance on Promotion of Safe and Proper Use of Bicycles" in order to prevent traffic accidents involving bicycles.

Enforced from April 1, 2021

Conduct education and raise awareness on the safe and proper use of bicycles at homes, schools, corporations, etc.

Obey traffic rules and show consideration to pedestrians, etc.

- Strive to **acquire the knowledge and skills** required for the safe and proper use of bicycles.
- Understand your responsibility as a bicycle rider, and **comply with laws and regulations** such as the Road Traffic Act.
- Show consideration for the **passage of pedestrians, other bicycles and vehicles**, and strive for safe and proper use of bicycles.

Enforced from October 1, 2021

Both adults and children must wear bicycle helmets

You must strive to wear a helmet whenever you ride.

- To avoid fatal accident or serious injury, always wear a **bicycle helmet** when riding a bicycle.

From April 1, 2021

We have started providing subsidies for the purchase of helmets!

For details, please contact the municipal government where you live.

Regarding subsidy for purchasing a helmet

A document (receipt, etc.) confirming that payment for a helmet has been completed is required to apply for a subsidy.* Please contact the municipal government where you live for information on the subsidy system of each municipality.

*The city of Toyohashi uses a subsidy system for sellers, so procedures are different.



Periodically inspect your bicycle, take measures to prevent traffic accidents, etc.

- Strive to **periodically inspect** your bicycle and conduct necessary maintenance.
- Strive to take measures for preventing traffic accidents, such as installing **reflectors on both sides** of the bicycle.
- Strive to take measures for preventing theft of your bicycle, such as by **locking** the bicycle.

You must purchase bicycle liability insurance.

Insurance is now required!

- In order to protect yourself and victims in the accident, **you must purchase bicycle liability insurance.**

*Compensation for bicycle accidents may be included as special contracts in automobile insurance, fire insurance, accident insurance, etc. Please confirm the details for insurance coverage for yourself and your family.

Example of high compensation

Example 1 **92.66 million yen**

A high school boy crossed a road diagonally and collided with a male office worker (24 years old) who had been riding his bicycle straight in the oncoming lane. The man still suffers from severe physical impairment (loss of language function, etc.).

Example 2 **67.79 million yen**

A man was riding a bicycle while holding a plastic bottle in one hand. He entered an intersection without slowing down and collided with a woman (38 years old) in the middle of a pedestrian crossing. The woman died three days later.

Be sure to check! Important points of daily bicycle inspection

Saddle
 Is the saddle loose? Does it rattle?

Lock
 Can the lock be fastened securely?

Reflectors
 Are the reflectors cracked or dirty?

Chain
 Is the chain rusty or loose?

Brakes
 Do the brakes work well?

Handlebars
 Are the handlebars loose? Do they rattle?

Frame
 Is there any major damage to the frame?

Light
 Does the light shine properly?

Tires
 Are the tires damaged or cracked?
 Are they excessively worn?
 Do they have right air pressure?

If there are any problems, please have the necessary maintenance performed at a bicycle shop, etc.

Now let's start! Bicycle Traffic Safety

Be as careful as a beginner! For adults

Now let's start!
Wear a helmet!
From October 2021, adults and children must now make an effort to always wear a bicycle helmet when riding! Subsidies are available for purchasing a helmet!

Now let's start!
Purchase insurance!
From October 2021, purchasing bicycle liability insurance became mandatory!

Now let's start!
Be careful at intersections!
No smartphones while riding! Obey traffic lights and stop signs! Ride on the left side of the road! Check and maintain your bicycle regularly!

Did you know?
Characteristics of bicycle accidents

4 Choices Multiple Choice Quiz

Q Characteristic 1
In a bicycle accident, which of the following is **most commonly the other party?**

- 1 Another **bicycle**
- 2 A **pedestrian**
- 3 A **motorcycle or scooter**
- 4 An **automobile**

Q Characteristic 2
In the case of accidents involving a bicycle and an automobile, what is the **most common type of accident?**

- 1 **Rear-end collision**
- 2 **Collision while overtaking or passing**
- 3 **Broadside collision**
- 4 **Collision when turning right or left**

Q Characteristic 3
In fatal bicycle accidents, what **part of the body** was injured and caused death?

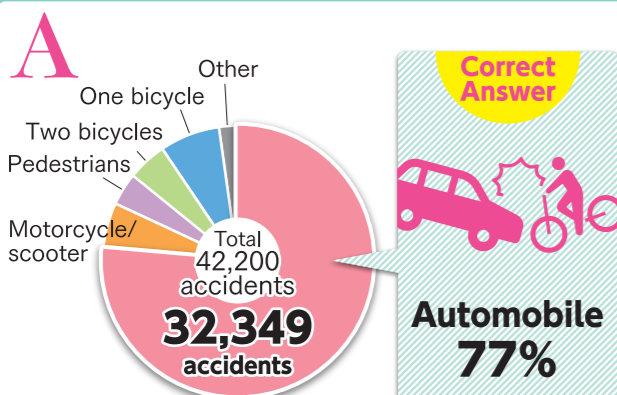
- 1 **Head**
- 2 **Chest**
- 3 **Lower back**
- 4 **Neck**

Answers are written on the inside page.

Answers to Quiz

Characteristic 1

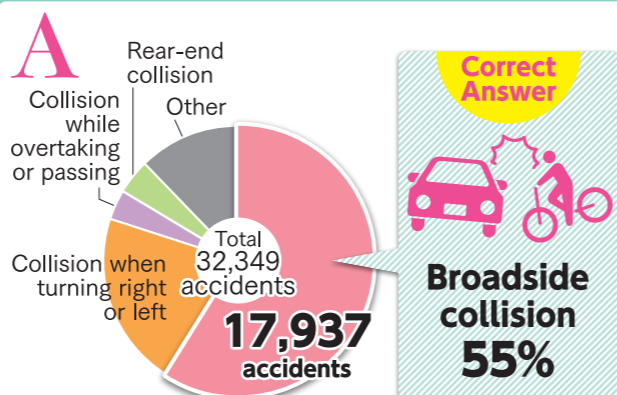
Q In a bicycle accident, which of the following is **most commonly the other party**?



Number of bicycle-related fatalities and serious injuries by other party to the accident (first party/second party) (2016 to 2020)
Excerpt from "Unique Characteristics of Bicycle Accidents" on the National Police Agency website

Characteristic 2

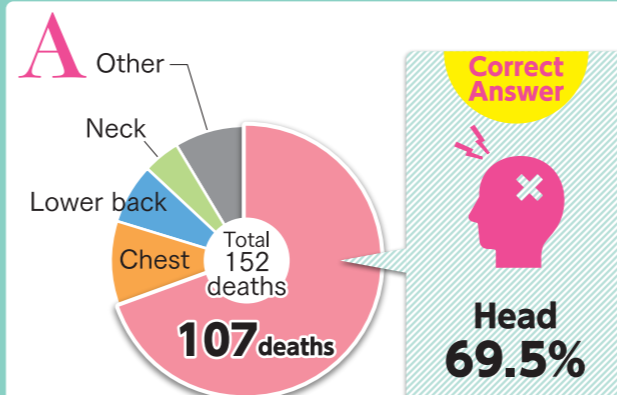
Q In the case of accidents involving a bicycle and an automobile, what is **the most common type of accident**?



Number of bicycle-related fatalities and serious injuries by other party to the accident (first party/second party) (2016 to 2020)
Excerpt from "Unique Characteristics of Bicycle Accidents" on the National Police Agency website

Characteristic 3

Q In fatal bicycle accidents, what **part of the body was injured and caused death**?



Ratio of Main Injured Body Parts in Fatal Traffic Accidents in Aichi Prefecture(2016 to 2020)
From website of Aichi Prefectural Government

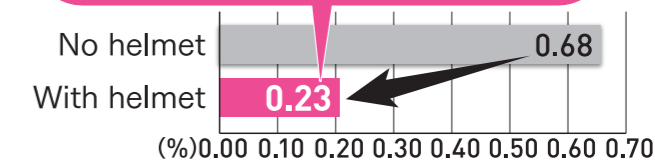
How can **injury** be reduced?

Wear a helmet!!

Adults should also wear a helmet.

Wearing a helmet decreases head injuries suffered in accidents and reduces the fatality rate to one-third.

Wearing a helmet reduces the fatality rate to one-third!



Fatality rate for wearing/not wearing helmet when riding a bicycle (2020)

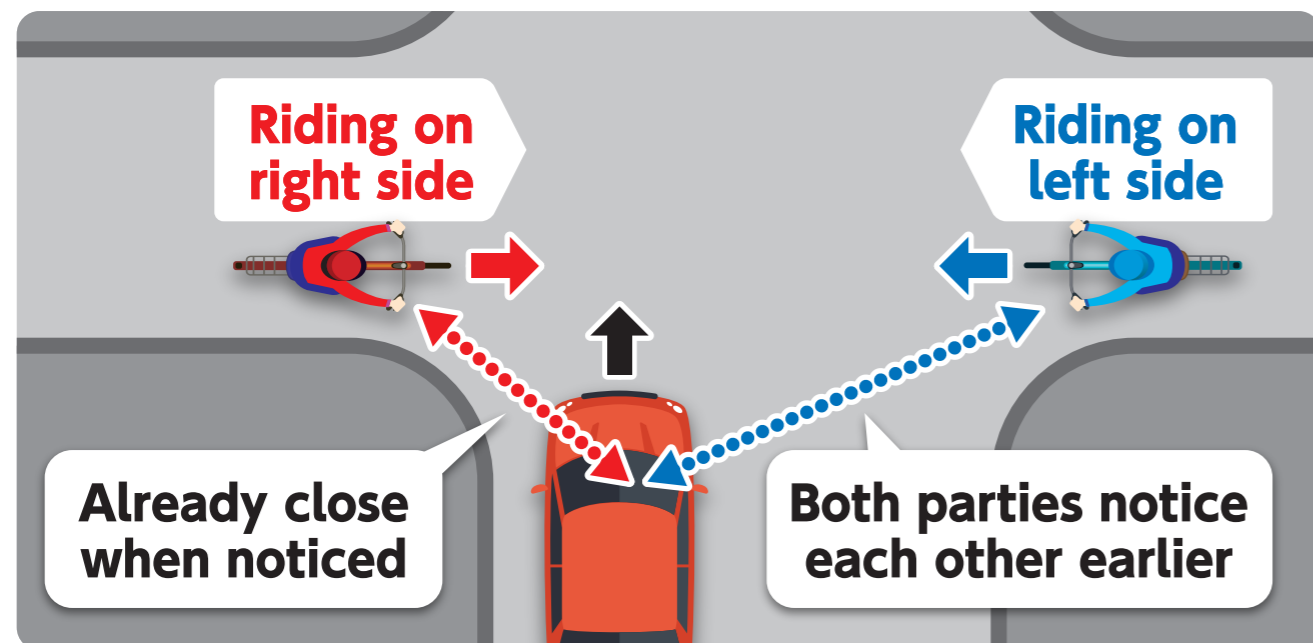
Excerpt from Metropolitan Police Department website

How can we **reduce accidents**?

You must ride your bicycle on the left side of the road!

In principle, you must ride your bicycle **on the left side of the road!**

In situations like the figure shown below, the person riding their bicycle on the left side of the road (blue rider on the right in the figure) has more time to notice both the red bicycle and the car, and is more likely to avoid a collision.



It is important to obey **basic bicycle rules.**

In many cases, bicycle accidents are caused by violations of bicycle riders, such as failure to confirm safe conditions and failure to stop when necessary. Let's prevent traffic accidents by observing the basic rules of bicycles; for example, riding on the left side of the road, always stopping and confirming safety at stop signs, and obeying traffic lights. In particular, using smartphones when riding, failing to stop at stop signs, and ignoring traffic lights can lead to serious accidents. Never engage in such behavior.



As a general rule, bicycles should be ridden on the road. Even if you can ride on the sidewalk, stay on the side nearest the road, and if you are getting in the pedestrians' way, stop riding for a few moments.



Bicycle helmets come in many different types and designs, from competition helmets to hat-shaped helmets. Choose a helmet that best suits your needs.

These are punishable by
① a fine of up to 50,000 yen
② a fine of up to 50,000 yen or 3 months in prison

